



the play inspection company

Annual Inspection

Rusper Parish Council

High Street Playground

High Street, Rusper, West Sussex, RH12 4PX



API Associate

Unit 5, Glenmore Business Park, Blackhill Road, Poole, Dorset, BH16 6NL
t- 01202 590675 e- info@playinspections.co.uk

www.playinspections.co.uk



Inspection Scope for RPII Inspection Methodology

This document outlines the RPII scope for inspections undertaken by the Inspectors listed as Annual Inspectors on the RPII Register of Inspectors when undertaking Indoor Annual, Outdoor Annual, Outdoor Operational and Outdoor Routine inspections.

Inspections are undertaken with reference to the standards listed in this preamble only; where no date for the standard is given it will be the standard that is current at the time of inspection except where overlap periods are granted by the standards committee when standards are updated. The information contained in reports is provided to assist the owner/operator in fulfilling their responsibilities as detailed in the relevant standard. Other standards referenced within the listed standards do not form part of the inspection, unless they are also explicitly listed here.

The following standards are relevant to all installations of equipment that are publicly accessible to users; this includes public parks, pay and play parks, schools, nurseries, public houses, holiday parks, indoor play centres, farm parks etc. All equipment used or employed in publicly accessible areas should meet with the requirements of the relevant standards (listed below):

BS EN 1176 Parts 1, 2, 3, 4, 5, 6, 10 & 11 Playground equipment intended for permanent installation outdoors & indoors.

BS EN 1176 Part 7 - 'Guidance on Installation, Inspection, Maintenance and Operation' (this document gives guidance to the owners/operators of the facility on the installation, inspection, maintenance and operation of playground equipment, excluding ancillary items).

In the United Kingdom the National Foreword forms an important part to the understanding and implementation of the recommendations set out in this document. It clarifies the application of the document within the UK as best practice guidance, as the document has been used since its initial publication. Therefore, in the UK this standard (BS EN 1176 – Part 7) contains no requirements and needs to be read and implemented as guidance, with the use of the term 'shall' therefore becoming a recommendation, as in the term 'should'.

Domestic play equipment falls outside of the scope of BS EN 1176 and has its own standards (BS EN 71 series – Safety of Toys). Where domestic equipment can be identified this will be acknowledged in the report but any comments concerning compliance will follow the requirements and recommendations of BS EN 1176.

When water play items, including spray parks, are inspected any comments concerning compliance within the inspection will refer to BS EN 1176. We have not assessed these against the requirements of BS EN 17232 (Water play equipment and features).

Other equipment that is not clearly identified as unsupervised or domestic (natural play, self-build equipment etc.) will be assessed for compliance with the relevant standard listed below:

BS EN 15312 Free access multi-sports equipment
BS EN 14974 Skateparks
BS EN 16630 Permanently installed outdoor fitness equipment
BS EN 16899 Parkour equipment (plus RPII/API guidance notes)

Annual and Post Installation inspections will take into consideration compliance with these current standards, and defects related to wear and vandalism. Items not listed in the report have not been included in the inspection. The inspection will cover the playground equipment and the active area (that area which is obviously part of the playground), nominally up to three metres around, the fence line if closer, or other areas as agreed.

Operational inspections only take into consideration defects related to cleanliness, equipment ground clearances, ground surface finishes, exposed foundations, sharp edges, missing parts, excessive wear (of moving parts) structural integrity, wear and vandalism.

Routine visual inspections relate only to the most obvious defects such as broken or missing parts, litter, vandalism and issues created by severe weather conditions (the intention is to identify hazards created by storm damage).

All inspections are non-dismantling, non-destructive and do not include any structural, toxicology or impact assessments defined in the standard; however, the inspector will undertake a manual test for stability and if equipment fails under manual load, or any other hazard is identified as an unacceptable risk, the owner/operator will be notified as soon as practicably possible.

The inspector will access all reasonably accessible equipment and will assess all reasonably accessible parts above the standing surface. Where it is not possible to access parts of the equipment without employing an alternative means of access the report will record the action required by the owner/operator to ensure the continued safe use of the equipment.

Ancillary equipment will be assessed using the inspector's knowledge and experience of the standards named in this document. (Note: Ancillary items are not included in the specific equipment-type parts of the EN 1176 series; hence they are not assessed for compliance with EN 1176 series and are subject to a general safety assessment).

The owner/operator is responsible for the overall safety of the equipment and area.

The inspector will not undertake any of the following works unless specifically agreed in writing at the time of order:

Checking the depth and underlying structural integrity of any surface areas and/or carrying out any testing of the impact attenuating properties of any surfaces; the identification of any corrosion, rot or other deterioration in any apparatus or equipment other than by an external inspection; the inspection of any equipment (or part thereof) that is beneath the playing surface (loose-fill materials may be moved to expose foundations); tightening any bolts, hinges or other fixing devices on any apparatus or equipment; assessing or inspecting any electrical installations contained on any site and/or apparatus and/or equipment; assessing or inspecting any water supplies and/or water features and/or any associated computerised systems (including carrying out any programming); where planting or trees are mentioned in the report no assessments of toxicity, suitability or condition are undertaken – the owner/operator should have suitable inspections provided by a competent person.

The owner/operator should have a 'design risk assessment' provided by the manufacturer/designer of the area for the equipment and location in which the facility is installed.

The operator is responsible for managing risks of their provision and is required by law to carry out a 'suitable and sufficient assessment' of the risks associated with a site or activity. This inspection shall be considered as contributing to the operator's discharge of this responsibility.

The details contained within the report are a snapshot of the condition at the time of inspection only and subsequent events may affect the condition of the facility. Suggested remedial actions are based on the knowledge and experience of the inspector and/or that of the inspection company. The owner/operator should always seek the advice of the manufacturer or a competent person when undertaking repairs and/or modifications to equipment.

A full copy of the Play Inspection Company Ltd. Terms & Conditions is available on our website (www.playinspections.co.uk)

The operator is responsible for following the guidance of the relevant standards. The standards give guidance on the installation, inspection, maintenance and operation of the various types of facilities. The inspection guidance is listed in Table 1, with an indication of which parts will be included in an RPII Annual or Post-Installation Inspection. The relevant standards also contain additional parts which the operator should follow.

Inspection recommendations of relevant standards Refer to relevant standards for full text	Annual Main	RPII Annual/ Post Installation Inspection
6.1 d) Overall levels of safety of equipment (see note 1)	✓	✓ [1]
6.1 d) Overall levels of safety of foundations (see note 1)	✓	✓ [1]
6.1 d) Overall levels of safety of playing surfaces (see note 2)	✓	✓ [2]
6.1 d) Compliance with the relevant parts of the standard and or risk assessment (see note 3)	✓	✓ [3]
6.1 d) Effects of weather	✓	✓
6.1 d) Presence of rot, decay or corrosion (see note 1)	✓	✓ [1]
6.1 d) Assessment of repairs made or added or replaced components (see note 4)	✓	✓ [4]
6.1 d) Excavation or dismantling/additional measures	✓	✗
6.2.1 Assessment of glass reinforced plastics (see note 5)	✓	✓ [5]
6.2.1 Inspection of one post equipment (see note 1)	✓	✓ [1]
6.2.4 Undertaking the Operators inspection protocol	✓	✗

NB: The clause numbers in table 1 are taken from BS EN 1176 - Part 7:2020. The content is equally applicable to all other relevant standards listed herein. Playgrounds contain a range of equipment from different manufacturers and installed over a number of years; operators should implement any guidance provided by the manufacturer. Item specific detail is not readily available to RPII Playground Inspectors, whose report contributes to the operator's overall Annual Main Inspection as detailed in the relevant standards.

[1] A manual test only is undertaken for stability. Wear and instability are only detectable where readily apparent without dismantling or destruction and without the use of tools, excavation or specialist equipment. Rot and corrosion are tested or with a hammer and/or steel rod. Decay in timber may exist which can only be found with specialist equipment.


[2] Only the visible condition and dimensional compliance of surface extent is considered. Neither testing of impact attenuating properties nor measurement of the thickness of bound surfaces are undertaken on RPII annual inspections.

[3] The inspection assesses compliance where this can be tested on site using manual methods without dismantling, destruction and without the use of tools or specialist equipment.

[4] The operator should use manufacturer's recommended parts, or equivalent. We are unable to verify if such parts have been used, and any subsequent change in quality or performance.

[5] Visible glass fibres will be noted in reports. The operator is responsible for repairs or replacement.

Risk Assessment Matrix

			Scores in the report are multiplication factors of Likelihood x Severity					
			Severity>>					
Likelihood	Very High probability, if the situation is not addressed an accident is almost certain.	5	Very High	VL (5)	L (10)	M (15)	H (20)	VH (25)
	High probability an accident is probable without any added factor.	4	High	VL (4)	L (8)	M (12)	H (16)	H (20)
	Moderate probability an incident is foreseeable.	3	Moderate	VL (3)	L (6)	L (9)	M (12)	M (15)
	Some probability, requires a combination of factors to take place.	2	Low	VL (2)	VL (4)	L (6)	L (8)	L (10)
	No significant probability; lightning strike, freak accident.	1	Very Low	VL (1)	VL (2)	VL (3)	VL (4)	VL (5)
				Very Low	Low	Moderate	High	Very High
				1	2	3	4	5
				No injury likely e.g. damaged or soiled clothing, minor bruising, grazes	Minor injury, laceration or bruising requiring first aid only	Injury requiring medical intervention e.g. cuts requiring stitches	Serious injury including concussions or fracture of long bones	Severe injury involving a potential life changing injury or fatality
				Severity>>				
<p>Note 1: The total risk scores included within our reports are a multiplication factor of the calculated Likelihood and Severity of each finding. Both Likelihood and Severity are given a number between 1 - 5 as shown on the matrix above and these two numbers are then multiplied together to give the total risk score that is shown against defects on the report. Total risk scores can be divided in both directions, i.e. a total risk score of 12 could be a Likelihood (3) x Severity (4) or Likelihood (4) x Severity (3).</p> <p>Note 2: When we inspect we only see a snapshot of the current condition of the equipment. It is the operators responsibility to ensure that there is a continuing level of maintenance to keep the equipment in good working order and the site fit for use.</p>								

Equipment has been assessed to the following standards where relevant:

BS EN 1176 Parts 1-11 (Playground equipment and surfacing)
BS EN 14974 (Facilities for users of roller sports equipment)
BS EN 15312 (Free access multi-sports equipment)
BS EN 16899 (Parkour Equipment)
BS EN 16630 (Outdoor Fitness Equipment).

High Street Playground

Inspection Ref: 1946545

Site Ref: 19074

Inspected: 15-February-2023 - 20:01 by Robert Baldock (RPII Annual Inspector)

Risk Assessment: 12 Moderate Risk



Location:

The site is partially overlooked by properties in the local community

Disabled Access:

Some accessible features; an area that presents difficulties to the majority of people with disabilities but in favourable circumstances and certainly in partnership can be accessed.

i 8 - Low Risk

Item: Site General
Manufacturer: Not Applicable
Surface Type: N/A
Item Quantity: 1
Equipment Compliance: N/A
Surface Area Compliance: N/A

Total Findings: 3



Finding 1

There is moderate damage to the surface - Repair the damaged areas of surfacing

Finding 3

There is algae, silt or moss growth on the surface resulting in slippery conditions - Clean and treat appropriately

Finding 2

The safety surface around the area is beginning to wear - Monitor for any further deterioration and repair as required

i 8 - Low Risk

Item: Gate
Manufacturer: Owner/Operator
Surface Type: N/A
Item Quantity: 1
Equipment Compliance: N/A
Surface Area Compliance: N/A

Total Findings: 3



Finding 1

The gate is not operating correctly - Take effective action to ensure the gate closes between 4 and 8 seconds

Finding 3

There are projecting bolt thread(s) present - Remove excess thread length and deburr or provide cap

Finding 2

The gate is snagging on the surrounding surface preventing it from closing correctly - Carry out remedial works to ensure the gate closes correctly

8 - Low Risk

Item: Gate - Maintenance
Manufacturer: Owner/Operator
Surface Type: N/A
Item Quantity: 1
Equipment Compliance: N/A
Surface Area Compliance: N/A

Total Findings: 2



Finding 1

There is no padlock on the maintenance gate - Provide a padlock to secure the gate

Finding 2

There are projecting bolt thread(s) present - Remove excess thread length and deburr or provide cap

4 - Very Low Risk

Item: Litter Bin
Manufacturer: Owner/Operator
Surface Type: N/A
Item Quantity: 1
Equipment Compliance: N/A
Surface Area Compliance: N/A

Total Findings: 1



Finding 1

This item is satisfactory - no work required -



i 4 - Very Low Risk

Item: Fence - Chainlink
Manufacturer: Owner/Operator
Surface Type: N/A
Item Quantity: 1
Equipment Compliance: N/A
Surface Area Compliance: N/A

Total Findings: 1



Finding 1

This item is satisfactory - no work required -

i 4 - Very Low Risk

Item: Sign
Manufacturer: Owner/Operator
Surface Type: N/A
Item Quantity: 1
Equipment Compliance: N/A
Surface Area Compliance: N/A

Total Findings: 1



Finding 1

This item is satisfactory - no work required -

4 - Very Low Risk

Item: Bench
Manufacturer: Owner/Operator
Surface Type: Grass
Item Quantity: 2
Equipment Compliance: N/A
Surface Area Compliance: N/A

Total Findings: 1



Finding 1

This item is satisfactory - no work required -

6 - Low Risk

Item: Bench
Manufacturer: Owner/Operator
Surface Type: N/A
Item Part Number:
Item Quantity: 3
Equipment Compliance: N/A
Surface Area Compliance: N/A
Total Findings: 3



Finding 1

There is weed / vegetation growth on, between, or around the edges of the surfacing - Remove weed / vegetation growth

Finding 3

There is some evidence of rot in the timber - Monitor for any further deterioration and replace as required

Finding 2

There is algae or moss on the surface of the equipment - Clean and treat appropriately

i 8 - Low Risk

Item: Picnic Table
Manufacturer: Owner/Operator
Surface Type: N/A
Item Part Number:
Item Quantity: 6
Equipment Compliance: N/A
Surface Area Compliance: N/A
Total Findings: 1



Finding 1

The table/s is/are not secured to the ground and there is some potential for the item/s to be moved within falling spaces of equipment - Secure to the ground

i 8 - Low Risk

Item: Shelter
Manufacturer: Owner/Operator
Surface Type: N/A
Item Quantity: 1
Equipment Compliance: N/A
Surface Area Compliance: N/A
Total Findings: 2



Finding 1

There are areas or parts of the timber on the structure that have rotted - Replace all affected timbers

Finding 2

The item has been damaged and there are planks of wood scattered around the area - Remove all loose timber and repair the item



i 9 - Low Risk

Item: Low Rotator
Manufacturer: Sutcliffe Play Limited
Surface Type: Wet Pour
Item Quantity: 1
Equipment Compliance: Yes
Surface Area Compliance: Yes

Total Findings: 3



Finding 1

The paintwork on this item has been damaged or worn exposing the metal underneath which is rusting - Treat any rusting components and repaint

Finding 3

There are gaps opening between the surfacing and the edging surround or between the joints in the surfacing - Monitor for any further deterioration and repair as required

Finding 2

There is some damage to the handgrips - Replace all affected components

i 8 - Low Risk

Item: Activity Trail
Manufacturer: Playahead
Surface Type: Wet Pour
Item Quantity: 1
Equipment Compliance: No
Surface Area Compliance: No

Total Findings: 11



Finding 1

The adjacent log beam forms a hard object within the falling space of the equipment in contravention of the requirements of BS EN 1176 Part 1 - Monitor - No remedial work recommended

Finding 2

The surfacing dimensions are short and do not meet with the requirements of the current applicable standard - Monitor - no remedial action recommended

Finding 3

The paintwork on the spring has been damaged or worn exposing the metal underneath which is rusting - Treat any rusting components and repaint

Finding 4

There are projecting bolt thread(s) present - Remove excess thread length and deburr or provide cap

Finding 5

There is algae or moss on the surface of the equipment - Clean and treat appropriately

Finding 6

The timber has a number of splits/shakes or air cracks and this may affect the stability or allow water ingress which will accelerate the rotting process - Monitor to ensure the splits do not cross through fixing points of the structure and/or cause any instability

Finding 7

There is/are bolt cap covers missing or damaged on the item - Replace missing or damaged bolt cap covers

Finding 8

There is some evidence of rot in the timber - Monitor for any further deterioration and replace as required

Finding 9

There is some damage to the timber - Monitor for any further deterioration and repair as required

Finding 10

There is some minor damage to the surface - Monitor for any further deterioration and repair as required

Finding 11

The rope connectors are showing signs of corrosion - Monitor for any further deterioration and replace as required

8 - Low Risk

Item: Spinner Bowl
Manufacturer: Sutcliffe Play Limited
Surface Type: Grass Matrix Tiles
Item Quantity: 1
Equipment Compliance: Yes
Surface Area Compliance: Yes

Total Findings: 2



Finding 1

The grass mats are silted up and the soil is compacted; this may have an effect on the impact absorbing properties of the surface - Consider HIC testing impact absorbing properties to ensure the correct surface qualities are maintained for the equipment and replace as required

Finding 2

The paintwork on this item has been damaged or worn exposing the metal underneath which is rusting - Treat any rusting components and repaint

4 - Very Low Risk

Item: Spring Horse
Manufacturer: Ledon
Surface Type: Grass Matrix Tiles
Item Quantity: 1
Equipment Compliance: Yes
Surface Area Compliance: Yes

Total Findings: 1



Finding 1

This item is satisfactory - no work required -

6 - Low Risk

Item: Spring Motorbike
Manufacturer: Ledon
Surface Type: Grass Matrix Tiles
Item Quantity: 1
Equipment Compliance: Yes
Surface Area Compliance: Yes

Total Findings: 2



Finding 1

There is some graffiti present - Remove the graffiti

Finding 2

The spring clamps are loose - Tighten all loose fixings

8 - Low Risk

Item: 1 Bay 2 Seat (Flat)
Manufacturer: Playdale Playgrounds Ltd
Surface Type: Wet Pour
Item Quantity: 1
Equipment Compliance: Yes
Surface Area Compliance: Yes

Total Findings: 6



Finding 1

The timber has a number of splits/shakes or air cracks and this may affect the stability or allow water ingress which will accelerate the rotting process - Monitor to ensure the splits do not cross through fixing points of the structure and/or cause any instability

Finding 2

The bushes are showing signs of wear - Monitor for any further deterioration and replace as required

Finding 3

The seat has minor damage or wear - Monitor for any further deterioration and replace as required

Finding 4

There is some notable evidence of chain wear - Monitor for any further deterioration and replace when 40% worn

Finding 5

There is moderate damage to the surface - Repair the damaged areas of surfacing

Finding 6

There is some evidence of rot in the timber - Monitor for any further deterioration and replace as required

12 - Moderate Risk

Item: 1 Bay 2 Seat (Cradle)
Manufacturer: Playdale Playgrounds Ltd
Surface Type: Wet Pour
Item Quantity: 1
Equipment Compliance: No
Surface Area Compliance: Yes

Total Findings: 9



Finding 1

The timber has a number of splits/shakes or air cracks and this may affect the stability or allow water ingress which will accelerate the rotting process - Monitor to ensure the splits do not cross through fixing points of the structure and/or cause any instability

Finding 3

There is some evidence of rot in the timber - Monitor for any further deterioration and replace as required

Finding 5

There is some notable evidence of chain wear - Monitor for any further deterioration and replace when 40% worn

Finding 7

The swing seat frames are corroding - Monitor for any further deterioration and replace as required

Finding 9

The bushes are showing signs of wear - Monitor for any further deterioration and replace as required

Finding 2

There is/are bolt cap covers missing or damaged on the item - Replace missing or damaged bolt cap covers

Finding 4

The seat has minor damage or wear - Monitor for any further deterioration and replace as required

Finding 6

One of the seat connectors is loose - Secure all loose connections

Finding 8

The connecting links are in excess of 8.6mm and less than 12mm and fail the requirements of BS EN 1176 Part 1; clause 4.2.13, Chains - Monitor - No remedial work recommended

i 10 - Low Risk

Item: Cantilever Swing - Type 3
Manufacturer: Not Identified
Surface Type: Grass Matrix Tiles
Item Quantity: 1
Equipment Compliance: No
Surface Area Compliance: Yes

Total Findings: 5



Finding 1

The connecting links are in excess of 8.6mm and less than 12mm and fail the requirements of BS EN 1176 Part 1; clause 4.2.13, Chains - Monitor - No remedial work recommended

Finding 2

The incorrect seat design has been installed on this swing; there are unique designs for Type 1 and Type 3 swings that provide differing impact attenuating properties to the leading edges of the seat and/or has incorrectly aligned seat eye fixings which will lead to accelerated wear. - Consider replacing with the correct design seat

Finding 3

The grass mats are silted up and the soil is compacted; this may have an effect on the impact absorbing properties of the surface - Consider HIC testing impact absorbing properties to ensure the correct surface qualities are maintained for the equipment and replace as required

Finding 4

There is some wear to the shackles. - Monitor for any further deterioration and replace when 40% worn

Finding 5

There is some wear to the universal joint - Monitor for any further deterioration and repair as required

i 8 - Low Risk

Item: Multi Play (Junior)
Manufacturer: Playdale Playgrounds Ltd
Surface Type: Wet Pour
Item Quantity: 1
Equipment Compliance: No
Surface Area Compliance: Yes

Total Findings: 13



Finding 1

There is moderate damage to the surface - Repair the damaged areas of surfacing

Finding 3

There is/are bolt cap covers missing or damaged on the item - Replace missing or damaged bolt cap covers

Finding 5

The timber has a number of splits/shakes or air cracks and this may affect the stability or allow water ingress which will accelerate the rotting process - Monitor to ensure the splits do not cross through fixing points of the structure and/or cause any instability

Finding 7

There is some evidence of rot in the timber - Monitor for any further deterioration and replace as required

Finding 9

There is insufficient guarding on the steps leading up to the platform that exceeds 1m in height which contravenes the requirements on BS EN 1176 Part 1 - Monitor - No remedial work recommended

Finding 11

There is some graffiti present - Remove the graffiti

Finding 13

There are a number of dents in the slide surface - Monitor for any further deterioration and repair as required

Finding 2

There are splits in the timber running through fixing points and creating some instability in the structure - Replace all affected timber parts

Finding 4

The item fails to meet the requirements of BS EN 1176 Part 1 4.2.7.2 head and neck entrapment in the barriers and/or steps - Monitor - No remedial work recommended

Finding 6

The timber stain is in poor condition - Prepare all affected parts and re-stain with an appropriate preservative

Finding 8

There are trip hazards at the edges of the surface - Reinstate surrounding surface levels to remove the trip points

Finding 10

The paint is flaking off the metalwork - Rub down and re-paint

Finding 12

The slide is predominately south facing and will catch the majority of the sun's heat during the day. Slide surfaces can become very warm during periods of sustained sunny weather - Monitor - No remedial work recommended

9 - Low Risk

Item: See Saw
Manufacturer: Hirst & Sons Ltd
Surface Type: Wet Pour
Item Quantity: 1
Equipment Compliance: Yes
Surface Area Compliance: Yes

Total Findings: 4



Finding 1

There is some minor wear to the pivot mechanism - Monitor for any further deterioration and repair as required

Finding 2

The paintwork on this item has been damaged or worn exposing the metal underneath which is rusting - Treat any rusting components and repaint

Finding 3

Parts of the timber are rough or splintered - Remove all rough or sharp edges

Finding 4

There are significant gaps (over 30mm) between the surface and the edging or between the joints in the surface; these are large enough for a small foot to enter - Repair surfacing

8 - Low Risk

Item: Cone Climber
Manufacturer: Tayplay Ltd
Surface Type: Grass Matrix Tiles
Item Quantity: 1
Equipment Compliance: Yes
Surface Area Compliance: Yes

Total Findings: 3



Finding 1

The grass mats are silted up and the soil is compacted; this may have an effect on the impact absorbing properties of the surface - Consider HIC testing impact absorbing properties to ensure the correct surface qualities are maintained for the equipment and replace as required

Finding 2

There are gaps opening between the grass mat tiles - Provide additional ties or secure / reinstate surface

Finding 3

The surface has subsided in some areas - Monitor for any further deterioration and repair as required

Findings information

8 - Low Risk (Finding 1)

Item: Ancillary Items - Site General
Manufacturer: Not Applicable

Risk Level: L - Low Risk
Surface: N/A



Finding: There is moderate damage to the surface

Action: Repair the damaged areas of surfacing

i 6 - Low Risk (Finding 2)

Item: Ancillary Items - Site General
Manufacturer: Not Applicable

Risk Level: L - Low Risk
Surface: N/A



Finding: The safety surface around the area is beginning to wear

Action: Monitor for any further deterioration and repair as required

i 8 - Low Risk (Finding 3)

Item: Ancillary Items - Site General
Manufacturer: Not Applicable

Risk Level: L - Low Risk
Surface: N/A



Finding: There is algae, silt or moss growth on the surface resulting in slippery conditions

Action: Clean and treat appropriately

i 5 - Very Low Risk (Finding 1)

Item: Gates - Gate
Manufacturer: Owner/Operator

Risk Level: V - Very Low Risk
Surface: N/A



Finding: The gate is not operating correctly

Action: Take effective action to ensure the gate closes between 4 and 8 seconds

i 5 - Very Low Risk (Finding 2)

Item: Gates - Gate
Manufacturer: Owner/Operator

Risk Level: V - Very Low Risk
Surface: N/A



Finding: The gate is snagging on the surrounding surface preventing it from closing correctly

Action: Carry out remedial works to ensure the gate closes correctly

i 8 - Low Risk (Finding 3)

Item: Gates - Gate
Manufacturer: Owner/Operator

Risk Level: L - Low Risk
Surface: N/A



Finding: There are projecting bolt thread(s) present

Action: Remove excess thread length and deburr or provide cap

i 6 - Low Risk (Finding 1)

Item: Gates - Gate - Maintenance
Manufacturer: Owner/Operator

Risk Level: L - Low Risk
Surface: N/A



Finding: There is no padlock on the maintenance gate

Action: Provide a padlock to secure the gate

i 8 - Low Risk (Finding 2)

Item: Gates - Gate - Maintenance
Manufacturer: Owner/Operator

Risk Level: L - Low Risk
Surface: N/A



Finding: There are projecting bolt thread(s) present

Action: Remove excess thread length and deburr or provide cap

i 6 - Low Risk (Finding 1)

Item: Ancillary Items - Bench
Manufacturer: Owner/Operator

Risk Level: L - Low Risk
Surface: N/A



Finding: There is weed / vegetation growth on, between, or around the edges of the surfacing
Action: Remove weed / vegetation growth

i 6 - Low Risk (Finding 2)

Item: Ancillary Items - Bench
Manufacturer: Owner/Operator

Risk Level: L - Low Risk
Surface: N/A



Finding: There is algae or moss on the surface of the equipment
Action: Clean and treat appropriately

i 6 - Low Risk (Finding 3)

Item: Ancillary Items - Bench
Manufacturer: Owner/Operator

Risk Level: L - Low Risk
Surface: N/A



Finding: There is some evidence of rot in the timber

Action: Monitor for any further deterioration and replace as required

i 8 - Low Risk (Finding 1)

Item: Ancillary Items - Picnic Table
Manufacturer: Owner/Operator

Risk Level: L - Low Risk
Surface: N/A



Finding: The table/s is/are not secured to the ground and there is some potential for the item/s to be moved within falling spaces of equipment

Action: Secure to the ground

i 8 - Low Risk (Finding 1)

Item: Ancillary Items - Shelter
Manufacturer: Owner/Operator

Risk Level: L - Low Risk
Surface: N/A



Finding: There are areas or parts of the timber on the structure that have rotted

Action: Replace all affected timbers

i 8 - Low Risk (Finding 2)

Item: Ancillary Items - Shelter
Manufacturer: Owner/Operator

Risk Level: L - Low Risk
Surface: N/A



Finding: The item has been damaged and there are planks of wood scattered around the area
Action: Remove all loose timber and repair the item

i 6 - Low Risk (Finding 1)

Item: Rotor Play - Low Rotator
Manufacturer: Sutcliffe Play Limited

Risk Level: L - Low Risk
Surface: Wet Pour



Finding: The paintwork on this item has been damaged or worn exposing the metal underneath which is rusting

Action: Treat any rusting components and repaint

i 9 - Low Risk (Finding 2)

Item: Rotor Play - Low Rotator
Manufacturer: Sutcliffe Play Limited

Risk Level: L - Low Risk
Surface: Wet Pour



Finding: There is some damage to the handgrips

Action: Replace all affected components

i 8 - Low Risk (Finding 3)

Item: Rotor Play - Low Rotator
Manufacturer: Sutcliffe Play Limited

Risk Level: L - Low Risk
Surface: Wet Pour



Finding: There are gaps opening between the surfacing and the edging surround or between the joints in the surfacing
Action: Monitor for any further deterioration and repair as required

i 5 - Very Low Risk (Finding 1)

Item: Activity Equipment - Activity Trail
Manufacturer: Playahead

Risk Level: V - Very Low Risk
Surface: Wet Pour



Finding: The adjacent log beam forms a hard object within the falling space of the equipment in contravention of the requirements of BS EN 1176 Part 1
Action: Monitor - No remedial work recommended

i 5 - Very Low Risk (Finding 2)

Item: Activity Equipment - Activity Trail
Manufacturer: Playahead

Risk Level: V - Very Low Risk
Surface: Wet Pour



Finding: The surfacing dimensions are short and do not meet with the requirements of the current applicable standard

Action: Monitor - no remedial action recommended

i 6 - Low Risk (Finding 3)

Item: Activity Equipment - Activity Trail
Manufacturer: Playahead

Risk Level: L - Low Risk
Surface: Wet Pour



Finding: The paintwork on the spring has been damaged or worn exposing the metal underneath which is rusting

Action: Treat any rusting components and repaint

i 8 - Low Risk (Finding 4)

Item: Activity Equipment - Activity Trail
Manufacturer: Playahead

Risk Level: L - Low Risk
Surface: Wet Pour



Finding: There are projecting bolt thread(s) present

Action: Remove excess thread length and deburr or provide cap

i 8 - Low Risk (Finding 5)

Item: Activity Equipment - Activity Trail
Manufacturer: Playahead

Risk Level: L - Low Risk
Surface: Wet Pour



Finding: There is algae or moss on the surface of the equipment

Action: Clean and treat appropriately

i 6 - Low Risk (Finding 6)

Item: Activity Equipment - Activity Trail
Manufacturer: Playahead

Risk Level: L - Low Risk
Surface: Wet Pour



Finding: The timber has a number of splits/shakes or air cracks and this may affect the stability or allow water ingress which will accelerate the rotting process
Action: Monitor to ensure the splits do not cross through fixing points of the structure and/or cause any instability

i 4 - Very Low Risk (Finding 7)

Item: Activity Equipment - Activity Trail
Manufacturer: Playahead

Risk Level: V - Very Low Risk
Surface: Wet Pour



Finding: There is/are bolt cap covers missing or damaged on the item
Action: Replace missing or damaged bolt cap covers

i 6 - Low Risk (Finding 8)

Item: Activity Equipment - Activity Trail
Manufacturer: Playahead

Risk Level: L - Low Risk
Surface: Wet Pour



Finding: There is some evidence of rot in the timber

Action: Monitor for any further deterioration and replace as required

i 6 - Low Risk (Finding 9)

Item: Activity Equipment - Activity Trail
Manufacturer: Playahead

Risk Level: L - Low Risk
Surface: Wet Pour



Finding: There is some damage to the timber

Action: Monitor for any further deterioration and repair as required

i 4 - Very Low Risk (Finding 10)

Item: Activity Equipment - Activity Trail
Manufacturer: Playahead

Risk Level: V - Very Low Risk
Surface: Wet Pour



Finding: There is some minor damage to the surface

Action: Monitor for any further deterioration and repair as required

i 6 - Low Risk (Finding 11)

Item: Activity Equipment - Activity Trail
Manufacturer: Playahead

Risk Level: L - Low Risk
Surface: Wet Pour



Finding: The rope connectors are showing signs of corrosion

Action: Monitor for any further deterioration and replace as required

i 8 - Low Risk (Finding 1)

Item: Rotor Play - Spinner Bowl
Manufacturer: Sutcliffe Play Limited

Risk Level: L - Low Risk
Surface: Grass Matrix Tiles



Finding: The grass mats are silted up and the soil is compacted; this may have an effect on the impact absorbing properties of the surface

Action: Consider HIC testing impact absorbing properties to ensure the correct surface qualities are maintained for the equipment and replace as required

i 6 - Low Risk (Finding 2)

Item: Rotor Play - Spinner Bowl
Manufacturer: Sutcliffe Play Limited

Risk Level: L - Low Risk
Surface: Grass Matrix Tiles



Finding: The paintwork on this item has been damaged or worn exposing the metal underneath which is rusting

Action: Treat any rusting components and repaint

i 0 - Risk Assessment not Undertaken (Finding 1)

Item: Rocking Equipment - Spring Motorbike
Manufacturer: Ledon

Risk Level: N - Risk Assessment not Undertaken
Surface: Grass Matrix Tiles



Finding: There is some graffiti present

Action: Remove the graffiti

i 6 - Low Risk (Finding 2)

Item: Rocking Equipment - Spring Motorbike
Manufacturer: Ledon

Risk Level: L - Low Risk
Surface: Grass Matrix Tiles



Finding: The spring clamps are loose

Action: Tighten all loose fixings

i 6 - Low Risk (Finding 1)

Item: Swings - 1 Bay 2 Seat (Flat)
Manufacturer: Playdale Playgrounds Ltd

Risk Level: L - Low Risk
Surface: Wet Pour



Finding: The timber has a number of splits/shakes or air cracks and this may affect the stability or allow water ingress which will accelerate the rotting process

Action: Monitor to ensure the splits do not cross through fixing points of the structure and/or cause any instability

i 4 - Very Low Risk (Finding 2)

Item: Swings - 1 Bay 2 Seat (Flat)
Manufacturer: Playdale Playgrounds Ltd

Risk Level: V - Very Low Risk
Surface: Wet Pour



Finding: The bushes are showing signs of wear

Action: Monitor for any further deterioration and replace as required

i 6 - Low Risk (Finding 3)

Item: Swings - 1 Bay 2 Seat (Flat)
Manufacturer: Playdale Playgrounds Ltd

Risk Level: L - Low Risk
Surface: Wet Pour



Finding: The seat has minor damage or wear

Action: Monitor for any further deterioration and replace as required

i 6 - Low Risk (Finding 4)

Item: Swings - 1 Bay 2 Seat (Flat)
Manufacturer: Playdale Playgrounds Ltd

Risk Level: L - Low Risk
Surface: Wet Pour



Finding: There is some notable evidence of chain wear

Action: Monitor for any further deterioration and replace when 40% worn

i 8 - Low Risk (Finding 5)

Item: Swings - 1 Bay 2 Seat (Flat)
Manufacturer: Playdale Playgrounds Ltd

Risk Level: L - Low Risk
Surface: Wet Pour



Finding: There is moderate damage to the surface

Action: Repair the damaged areas of surfacing

i 6 - Low Risk (Finding 6)

Item: Swings - 1 Bay 2 Seat (Flat)
Manufacturer: Playdale Playgrounds Ltd

Risk Level: L - Low Risk
Surface: Wet Pour



Finding: There is some evidence of rot in the timber

Action: Monitor for any further deterioration and replace as required

i 6 - Low Risk (Finding 1)

Item: Swings - 1 Bay 2 Seat (Cradle)
Manufacturer: Playdale Playgrounds Ltd

Risk Level: L - Low Risk
Surface: Wet Pour



Finding: The timber has a number of splits/shakes or air cracks and this may affect the stability or allow water ingress which will accelerate the rotting process
Action: Monitor to ensure the splits do not cross through fixing points of the structure and/or cause any instability

i 4 - Very Low Risk (Finding 2)

Item: Swings - 1 Bay 2 Seat (Cradle)
Manufacturer: Playdale Playgrounds Ltd

Risk Level: V - Very Low Risk
Surface: Wet Pour



Finding: There is/are bolt cap covers missing or damaged on the item
Action: Replace missing or damaged bolt cap covers

i 6 - Low Risk (Finding 3)

Item: Swings - 1 Bay 2 Seat (Cradle)
Manufacturer: Playdale Playgrounds Ltd

Risk Level: L - Low Risk
Surface: Wet Pour



Finding: There is some evidence of rot in the timber

Action: Monitor for any further deterioration and replace as required

i 6 - Low Risk (Finding 4)

Item: Swings - 1 Bay 2 Seat (Cradle)
Manufacturer: Playdale Playgrounds Ltd

Risk Level: L - Low Risk
Surface: Wet Pour



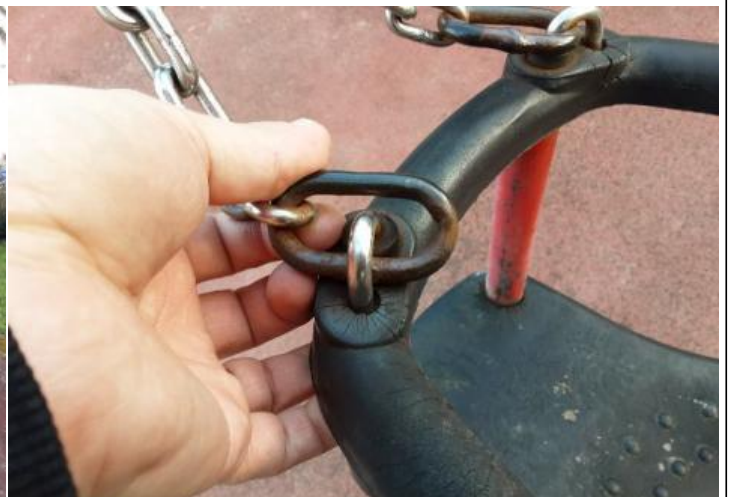
Finding: The seat has minor damage or wear

Action: Monitor for any further deterioration and replace as required

i 6 - Low Risk (Finding 5)

Item: Swings - 1 Bay 2 Seat (Cradle)
Manufacturer: Playdale Playgrounds Ltd

Risk Level: L - Low Risk
Surface: Wet Pour



Finding: There is some notable evidence of chain wear

Action: Monitor for any further deterioration and replace when 40% worn

! 12 - Moderate Risk (Finding 6)

Item: Swings - 1 Bay 2 Seat (Cradle)
Manufacturer: Playdale Playgrounds Ltd

Risk Level: M - Moderate Risk
Surface: Wet Pour



Finding: One of the seat connectors is loose

Action: Secure all loose connections

i 6 - Low Risk (Finding 7)

Item: Swings - 1 Bay 2 Seat (Cradle)
Manufacturer: Playdale Playgrounds Ltd

Risk Level: L - Low Risk
Surface: Wet Pour



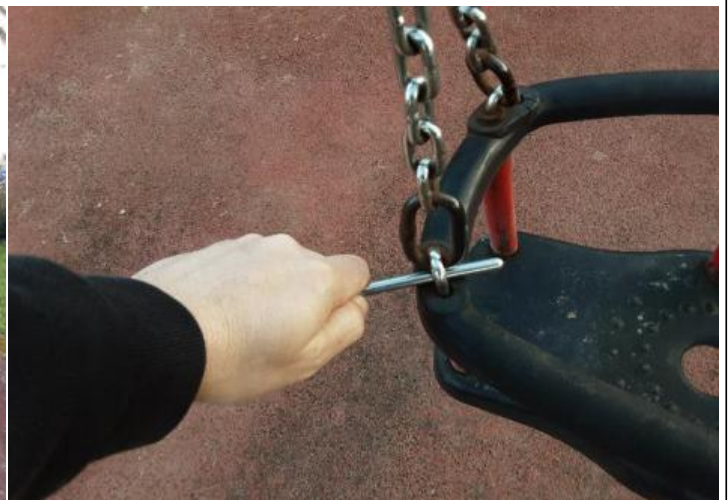
Finding: The swing seat frames are corroding

Action: Monitor for any further deterioration and replace as required

i 5 - Very Low Risk (Finding 8)

Item: Swings - 1 Bay 2 Seat (Cradle)
Manufacturer: Playdale Playgrounds Ltd

Risk Level: V - Very Low Risk
Surface: Wet Pour



Finding: The connecting links are in excess of 8.6mm and less than 12mm and fail the requirements of BS EN 1176 Part 1; clause 4.2.13, Chains

Action: Monitor - No remedial work recommended

i 4 - Very Low Risk (Finding 9)

Item: Swings - 1 Bay 2 Seat (Cradle)
Manufacturer: Playdale Playgrounds Ltd

Risk Level: V - Very Low Risk
Surface: Wet Pour



Finding: The bushes are showing signs of wear

Action: Monitor for any further deterioration and replace as required

i 5 - Very Low Risk (Finding 1)

Item: Swings - Cantilever Swing - Type 3
Manufacturer: Not Identified

Risk Level: V - Very Low Risk
Surface: Grass Matrix Tiles



Finding: The connecting links are in excess of 8.6mm and less than 12mm and fail the requirements of BS EN 1176 Part 1; clause 4.2.13, Chains

Action: Monitor - No remedial work recommended

i 10 - Low Risk (Finding 2)

Item: Swings - Cantilever Swing - Type 3
Manufacturer: Not Identified

Risk Level: L - Low Risk
Surface: Grass Matrix Tiles



Finding: The incorrect seat design has been installed on this swing; there are unique designs for Type 1 and Type 3 swings that provide differing impact attenuating properties to the leading edges of the seat and/or has incorrectly aligned seat eye fixings which will lead to accelerated wear.

Action: Consider replacing with the correct design seat

i 8 - Low Risk (Finding 3)

Item: Swings - Cantilever Swing - Type 3
Manufacturer: Not Identified

Risk Level: L - Low Risk
Surface: Grass Matrix Tiles



Finding: The grass mats are silted up and the soil is compacted; this may have an effect on the impact absorbing properties of the surface

Action: Consider HIC testing impact absorbing properties to ensure the correct surface qualities are maintained for the equipment and replace as required

i 6 - Low Risk (Finding 4)

Item: Swings - Cantilever Swing - Type 3
Manufacturer: Not Identified

Risk Level: L - Low Risk
Surface: Grass Matrix Tiles



Finding: There is some wear to the shackles.

Action: Monitor for any further deterioration and replace when 40% worn

i 8 - Low Risk (Finding 5)

Item: Swings - Cantilever Swing - Type 3
Manufacturer: Not Identified

Risk Level: L - Low Risk
Surface: Grass Matrix Tiles



Finding: There is some wear to the universal joint

Action: Monitor for any further deterioration and repair as required

i 8 - Low Risk (Finding 1)

Item: Activity Equipment - Multi Play (Junior)
Manufacturer: Playdale Playgrounds Ltd

Risk Level: L - Low Risk
Surface: Wet Pour



Finding: There is moderate damage to the surface

Action: Repair the damaged areas of surfacing

i 8 - Low Risk (Finding 2)

Item: Activity Equipment - Multi Play (Junior)
Manufacturer: Playdale Playgrounds Ltd

Risk Level: L - Low Risk
Surface: Wet Pour

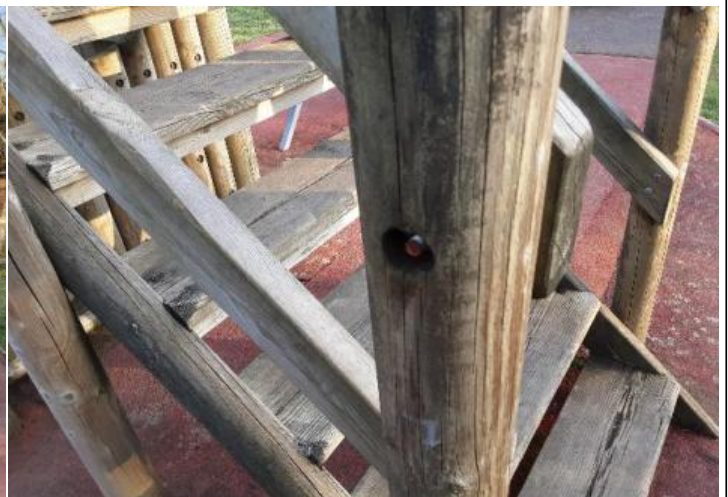


Finding: There are splits in the timber running through fixing points and creating some instability in the structure
Action: Replace all affected timber parts

i 4 - Very Low Risk (Finding 3)

Item: Activity Equipment - Multi Play (Junior)
Manufacturer: Playdale Playgrounds Ltd

Risk Level: V - Very Low Risk
Surface: Wet Pour



Finding: There is/are bolt cap covers missing or damaged on the item
Action: Replace missing or damaged bolt cap covers

i 5 - Very Low Risk (Finding 4)

Item: Activity Equipment - Multi Play (Junior)
Manufacturer: Playdale Playgrounds Ltd

Risk Level: V - Very Low Risk
Surface: Wet Pour



Finding: The item fails to meet the requirements of BS EN 1176 Part 1 4.2.7.2 head and neck entrapment in the barriers and/or steps

Action: Monitor - No remedial work recommended

i 6 - Low Risk (Finding 5)

Item: Activity Equipment - Multi Play (Junior)
Manufacturer: Playdale Playgrounds Ltd

Risk Level: L - Low Risk
Surface: Wet Pour



Finding: The timber has a number of splits/shakes or air cracks and this may affect the stability or allow water ingress which will accelerate the rotting process

Action: Monitor to ensure the splits do not cross through fixing points of the structure and/or cause any instability

i 6 - Low Risk (Finding 6)

Item: Activity Equipment - Multi Play (Junior)
Manufacturer: Playdale Playgrounds Ltd

Risk Level: L - Low Risk
Surface: Wet Pour



Finding: The timber stain is in poor condition

Action: Prepare all affected parts and re-stain with an appropriate preservative

i 6 - Low Risk (Finding 7)

Item: Activity Equipment - Multi Play (Junior)
Manufacturer: Playdale Playgrounds Ltd

Risk Level: L - Low Risk
Surface: Wet Pour



Finding: There is some evidence of rot in the timber

Action: Monitor for any further deterioration and replace as required

i 8 - Low Risk (Finding 8)

Item: Activity Equipment - Multi Play (Junior)
Manufacturer: Playdale Playgrounds Ltd

Risk Level: L - Low Risk
Surface: Wet Pour



Finding: There are trip hazards at the edges of the surface

Action: Reinstate surrounding surface levels to remove the trip points

i 4 - Very Low Risk (Finding 9)

Item: Activity Equipment - Multi Play (Junior)
Manufacturer: Playdale Playgrounds Ltd

Risk Level: V - Very Low Risk
Surface: Wet Pour



Finding: There is insufficient guarding on the steps leading up to the platform that exceeds 1m in height which contravenes the requirements on BS EN 1176 Part 1

Action: Monitor - No remedial work recommended

i 6 - Low Risk (Finding 10)

Item: Activity Equipment - Multi Play (Junior)
Manufacturer: Playdale Playgrounds Ltd

Risk Level: L - Low Risk
Surface: Wet Pour



Finding: The paint is flaking off the metalwork

Action: Rub down and re-paint

i 0 - Risk Assessment not Undertaken (Finding 11)

Item: Activity Equipment - Multi Play (Junior)
Manufacturer: Playdale Playgrounds Ltd

Risk Level: N - Risk Assessment not Undertaken
Surface: Wet Pour



Finding: There is some graffiti present

Action: Remove the graffiti

i 6 - Low Risk (Finding 12)

Item: Activity Equipment - Multi Play (Junior)
Manufacturer: Playdale Playgrounds Ltd

Risk Level: L - Low Risk
Surface: Wet Pour



Finding: The slide is predominately south facing and will catch the majority of the sun's heat during the day. Slide surfaces can become very warm during periods of sustained sunny weather

Action: Monitor - No remedial work recommended

i 4 - Very Low Risk (Finding 13)

Item: Activity Equipment - Multi Play (Junior)
Manufacturer: Playdale Playgrounds Ltd

Risk Level: V - Very Low Risk
Surface: Wet Pour



Finding: There are a number of dents in the slide surface

Action: Monitor for any further deterioration and repair as required

i 6 - Low Risk (Finding 1)

Item: Rocking Equipment - See Saw
Manufacturer: Hirst & Sons Ltd

Risk Level: L - Low Risk
Surface: Wet Pour



Finding: There is some minor wear to the pivot mechanism

Action: Monitor for any further deterioration and repair as required

i 6 - Low Risk (Finding 2)

Item: Rocking Equipment - See Saw
Manufacturer: Hirst & Sons Ltd

Risk Level: L - Low Risk
Surface: Wet Pour



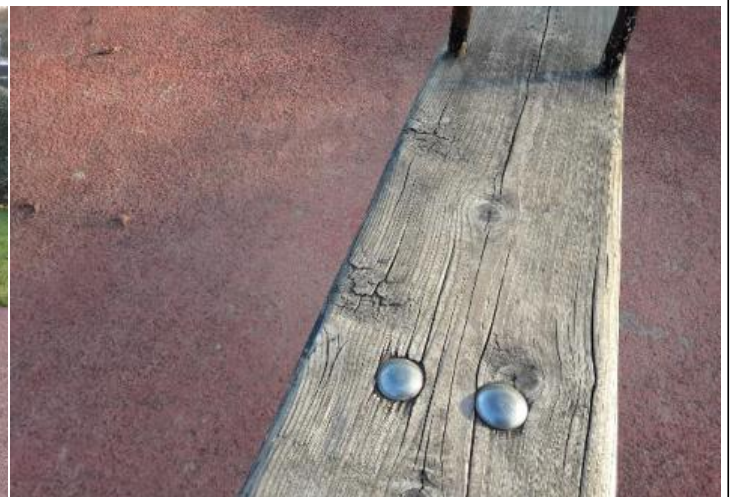
Finding: The paintwork on this item has been damaged or worn exposing the metal underneath which is rusting

Action: Treat any rusting components and repaint

i 6 - Low Risk (Finding 3)

Item: Rocking Equipment - See Saw
Manufacturer: Hirst & Sons Ltd

Risk Level: L - Low Risk
Surface: Wet Pour



Finding: Parts of the timber are rough or splintered

Action: Remove all rough or sharp edges

i 9 - Low Risk (Finding 4)

Item: Rocking Equipment - See Saw
Manufacturer: Hirst & Sons Ltd

Risk Level: L - Low Risk
Surface: Wet Pour



Finding: There are significant gaps (over 30mm) between the surface and the edging or between the joints in the surface; these are large enough for a small foot to enter

Action: Repair surfacing

i 8 - Low Risk (Finding 1)

Item: Rotor Play - Cone Climber
Manufacturer: Tayplay Ltd

Risk Level: L - Low Risk
Surface: Grass Matrix Tiles



Finding: The grass mats are silted up and the soil is compacted; this may have an effect on the impact absorbing properties of the surface

Action: Consider HIC testing impact absorbing properties to ensure the correct surface qualities are maintained for the equipment and replace as required

i 6 - Low Risk (Finding 2)

Item: Rotor Play - Cone Climber
Manufacturer: Tayplay Ltd

Risk Level: L - Low Risk
Surface: Grass Matrix Tiles



Finding: There are gaps opening between the grass mat tiles

Action: Provide additional ties or secure / reinstate surface tiles

i 6 - Low Risk (Finding 3)

Item: Rotor Play - Cone Climber
Manufacturer: Tayplay Ltd

Risk Level: L - Low Risk
Surface: Grass Matrix Tiles



Finding: The surface has subsided in some areas

Action: Monitor for any further deterioration and repair as required